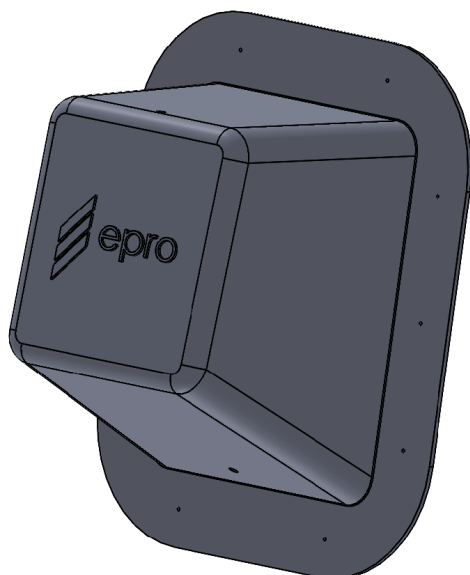




e.cover tb



Product Description

Basic Use: e.cover tb is a prefabricated, highly durable, quick and easy to install thermoplastic tieback cover designed to maximize concrete cover and minimize reinforcement interference. e.cover tb simplifies complex waterproofing detailing around soil retention tieback heads eliminating the need for time consuming field fabrication of tieback covers. e.cover tb is mechanically fastened to the soil retention system and easily integrates with any of EPRO's pre-applied systems for these critical detail areas. Specially molded with high density polyethylene (HDPE), e.cover tb is highly impact resistant with superior strength and durability to withstand concrete and shotcrete placement. Integrated ports for filler injection and perimeter fastener holes enhance productivity, protection, and durability. Available in three separate sizes, e.cover tb will fit most rod and strand tieback heads.

Composition: e.cover tb is a high density polyethylene (HDPE) durable thermoplastic pressure molded tieback cover with integrated filler injection holes, perimeter fastener guide holes and tie-back conforming shape.

Benefits

- Quick and easy installation eliminates field fabrication of tieback covers while enhancing protection at critical detailing areas.
- Highly durable high density polyethylene (HDPE) withstands concrete placement while offering robust waterproofing and environmental protection.
- HDPE allows heat weld capability for integration with waterproofing systems that utilize HDPE heat welded seams.
- Specially designed shape maximizes concrete cover, minimizes reinforcement interference, and reduces the potential for shadowing or non-consolidation of concrete.

- Integrated injection holes and perimeter fastener holes enhance durability, and ease of installation.

Limitations

- The soil retention system should be relatively flat, without protrusions, and provide continuity with the field waterproofing membrane.
- e.cover tb will not accommodate installation over non-standard sized tieback heads. Rod or strands should be cut relatively flush with the anchor nut or wedge.
- Rebar cannot impede the proper placement of the cover over the tieback.

Technical Data

Shelf life: Unlimited.

Properties: See dimensions table.

Specification Writer: Contact EPRO before writing specifications on this product. EPRO system assemblies should be reviewed in order to meet project specific site conditions.

Installation

Surface Preparation: All surfaces shall be prepared in accordance to manufacturer's specifications. In general, this means all surfaces shall be uniform and free of loose materials.

Application: Please refer to manufacturer's specifications.

Availability and Packaging

Contact EPRO sales representative for local distributors or authorized applicators (www.eproinc.com).

e.cover tb is available in three separate sizes with 6", 8", and 10" depths as measured from retention wall to cover peak. e.cover tb is also available as special order composed of ABS or TPO.

Warranty

Limited Warranty: EPRO Services, Inc. believes to the best of its knowledge that performance tables are accurate and reliable. EPRO warrants this product to be free from defects. EPRO makes no other warranties with respect to this product, express or implied, including without limitation the implied warranties of MERCHANTABILITY OR FITNESS FOR PARTICULAR PURPOSE. EPRO's liability shall be limited in all events to supplying sufficient product to retreat the specific areas to which defective product has been applied. EPRO shall have no other liability, including liability for incidental or resultant damages, whether due to breach of warranty or negligence. This warranty may not be modified or extended by representatives of EPRO or its distributors.



e.cover tb

Equipment

No special equipment is necessary.

Technical Services and Information

Complete technical services and information are available by contacting EPRO at 800.882.1896 or www.eproinc.com.

Dimensions

	Total Base Dimensions		Inner Cavity Dimensions At Base		Minimum Blockout Size	Minimum Sonotube Size
	Height x Width	Diagonal	Height x Width	Depth		
e.cover tb 6	14" x 12" 355mm x 305mm	14.23" 361mm	8" x 6" 203mm x 152mm	6" 152mm	20" x 18" 508mm x 457mm	22" 559mm
e.cover tb 8	18" x 16" 457mm x 406mm	19.87" 505mm	12" x 10" 305mm x 254mm	8" 203mm	24" x 22" 610mm x 559mm	28" 712mm
e.cover tb 10	21" x 18" 533mm x 457mm	23.45" 595mm	15" x 12" 381mm x 305mm	10" 254mm	27" x 24" 686mm x 610mm	32" 813mm