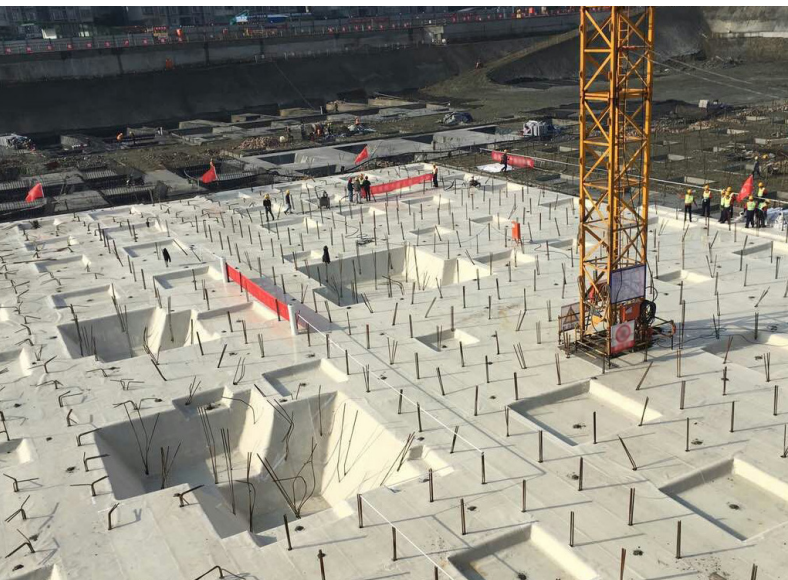




## PreTak



### Product Description

**Basic Use:** PreTak is utilized as a pre-applied sheet membrane for blindside vertical wall waterproofing and pre-applied underslab waterproofing and methane gas protection for horizontal applications. PreTak can be applied directly to a wide variety of substrates and utilizes high density polyethylene (HDPE) sheet that once installed provides a tough and durable waterproofing membrane. Combined with a Pressure Sensitive Adhesive (PSA), PreTak becomes fully adhered when freshly placed concrete or shotcrete is applied to directly to it, eliminating the potential for lateral water migration.

Installation is efficient and reliable with a manufacturer marked adhesive selvedge allowing for an watertight bond at seam overlaps. PreTak delivers superior performance in harsh conditions without the need for specialized equipment, heat, or power.

For heat welding applications, PreTak may be special ordered without pre-adhered selvedge along both sides of the roll for faster heat welding. PreTape is used to apply a PSA surface over the heat welded seams to eliminate lateral water migration. Please contact your EPRO representative for more information.

PreTak is approved for shotcrete and as gas and methane barrier by LADBS when using heat welded or reinforced seams (LARR #26164).

**Composition:** PreTak (46 mil/1.2mm) is a fully adhered waterproofing sheet membrane comprised of a long fiber HDPE film coated with a PSA gel and protected by a plastic release liner.

The edges of PreTak are exposed on both sides for 3-inches (70 mm) for heat welding or marked with with a 3-inch (70mm) wide pre-adhered adhesive selvedge seam.

v.1.1021

### Benefits

- Proven and effective, PreTak has an over 25-year successful track record of performance on projects around the world.
- PreTak is suitable for a variety of critical building envelope applications, challenging site conditions, and contaminated soils.
- Not affected by rain or ponding water.
- Surpasses other fully adhered HDPE membrane systems by achieving the ideal blend between value and performance.
- Prevents lateral water migration by forming a continuous adhesive bond to poured-in-place concrete.
- Versatile seam options for hydrostatic, non-hydrostatic, and shotcrete applications.

### Limitations

- Limited to underslab and single-sided formwork.
- A minimum of 3" (75 mm) of liquid concrete required to activate PSA surface.
- Do not leave exposed for longer than 60 days.
- Remove excessive substrate moisture prior to application.

### Technical Data

Properties: See physical properties table.

Coverages, not including overlaps or waste:

- Standard Roll: 256.5 square feet (24 square meters)

Special Order Products:

- Wide Roll: 513 square feet (48 square meters)
- Heat Weld (HW) Roll: 256.5 square feet (24 square meters)
- HW Wide Roll: 513 square feet (48 square meters)

**Storage and Handling:** Store raised off the floor away from sun and moisture, between 40-90°F (5-32°C), maximum 5 rolls high.

**Specification Writer:** Contact EPRO before writing specifications on this product. PreTak HDPE Pre-Applied Waterproofing System should be reviewed in order to meet project specific site conditions.

### Installation

**Preparation:** Please refer to manufacturer's specifications for substrate requirements. Rolls should be inspected for cosmetic damage prior to application.

**Application:** Please refer to manufacturer's specifications. Side laps, end laps, and cut ends have several seaming options depending on the application.

**Installation:** Roll PreTak out with the release liner facing the concrete pour. Line up the sheet edges and overlap a minimum of 3-inches (75 mm) for cut ends and endlap taped seams. For selvedge seams, line up top sheet to pre-adhered selvedge guideline. Remove release liner and roll to adhere seam.

**Heat Weld Seams:** For guidance on the heat welding option of PreTak, consult manufacturer's specifications.



## PreTak

### Availability and Packaging

Contact EPRO sales representative for local distributors or authorized applicators ([www.eproinc.com](http://www.eproinc.com)).

### Warranty

Limited Warranty: EPRO Services, Inc. believes to the best of its knowledge that performance tables are accurate and reliable. EPRO warrants this product to be free from defects. EPRO makes no other warranties with respect to this product, express or implied, including without limitation the implied warranties of MERCHANTABILITY OR FITNESS FOR PARTICULAR PURPOSE. EPRO's liability shall be limited in all events to supplying sufficient product to retreat the specific areas to which defective product has been applied. EPRO shall have no other liability, including liability for incidental or resultant damages, whether due to breach of warranty or negligence. This warranty may not be modified or extended by representatives of EPRO or its distributors.

### Equipment

- Seaming: 4" heavy seam roller, knife
- Heat Welding: Leister, Hot air wedge welder, extrusion weld, etc.
- Underslab Smoke Testing: EPRO Smoke Test Machine.

### Technical Services and Information

Complete technical services and information are available by contacting EPRO at 800.882.1896 or [www.eproinc.com](http://www.eproinc.com).

This product was formally known as Pre-tak by Kingfield Construction Products.

## Typical Physical Properties

Physical Property	Test Method	Value
Material .....		HDPE
Color .....		White
Thickness .....		46 Mil
Resistance to Hydrostatic Head .....	ASTM D 751 .....	715 ft (310 psi   218 m)
Tensile Strength, Film .....	ASTM D 412 .....	4742 psi (32.7 MPa) Force
Elongation .....	ASTM D 412 .....	722%
Puncture Resistance .....	ASTM E 154 .....	276 lbs (1227 N)
Resistance to Lateral Water Migration .....	ASTM D 5385 .....	Pass at 231 ft (71 m) of HH pressure
Peel Adhesion to Concrete .....	ASTM D 903 .....	23 lbs/in. (4028 N/m)
Permeance to Water Vapor Transmission .....	ASTM E 96, method B .....	0.087 perms (4.97 ng/(Pa x s x m <sup>2</sup> ))
Bonded Seam Strength (Heat Weld)* .....	ASTM D 6392 .....	Pass (Break in Sheet)
Dead Load Seam Strength (Heat Weld)* .....	ASTM D 751 .....	Pass
Microorganism Resistance (Soil Burial)* .....	ASTM D 4068 .....	Pass (Break in Sheet)
Methane Permeability* .....	ASTM D 1434 .....	Pass
Oil Resistance* .....	ASTM D 543 .....	Pass (Break in Sheet)
Heat Resistance* .....	ASTM D 4068 .....	Pass (Break in Sheet)
Environmental Stress Cracking (>500hrs)* .....	ASTM D 1693 .....	Pass

\*Tested to City of Los Angeles Department of Building and Safety Methane Testing Criteria.

LADBS | LARR (#26164) - Approved for Shotcrete..... **Yes**

LADBS | LARR (#26164) - Approved for Waterproofing..... **Yes**

LADBS | LARR (#26164) - Approved for Methane..... **Yes**

#### Dimensions:

- Standard: 3'-11" x 65'-6" (1.2 m x 20 m) - Wide: 7'-10" x 65'-6" (2.4 m x 20 m)
- Heat Weld (HW): 3'-11" x 65'-6" (1.2 m x 20 m) - HW Wide: 7'-10" x 65'-6" (2.4 m x 20 m)

#### Weight:

- Standard: 75 lbs (34 kg) - Wide: 150 lbs (68 kg)
- Heat Weld (HW): 75 lbs (34 kg) - HW Wide: 150 lbs (68 kg)