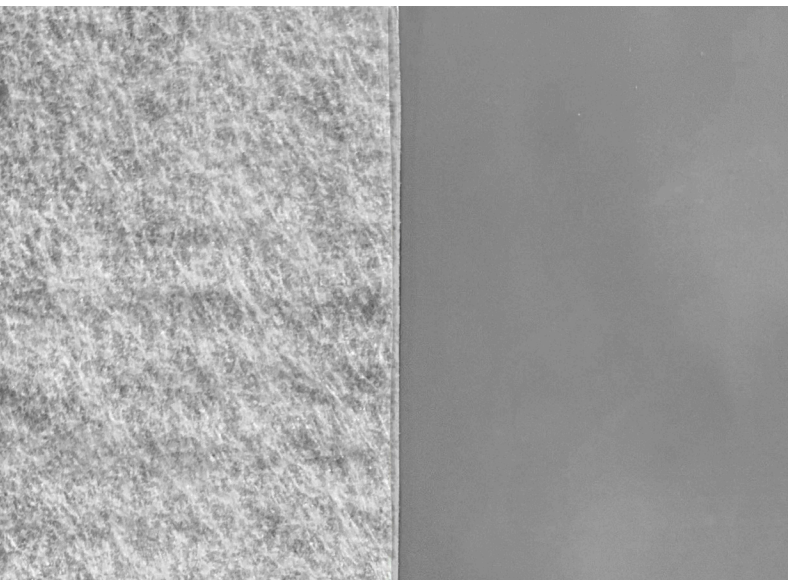




Geo-Seal® EV30



Product Description

Basic Use: Geo-Seal EV30 is a geocomposite EVOH base layer component to the Geo-Seal EV80 composite vapor intrusion barrier system. Geo-Seal EV30 utilizes the durability of a geotextile fabric to increase durability and provide the chemical resistant benefits of an Ethylene Vinyl Alcohol (EVOH) membrane. When used as a cthe Geo-Seal EV80 system, the Geo-Seal EV30 base course creates a system that reduces overall thickness but still maintains a high level of chemical resistance relative to thicker composite systems.

Composition: Geo-Seal EV30 is a 31-mil composite EVOH geomembrane with a 3 oz. geotextile bonded to one side to increase tensile strength and puncture resistance.

Benefits

- EVOH geocomposite base sheet membrane provides a robust base course option with enhanced chemical resistance.
- A geotextile reinforced EVOH membrane enhances tensile strength and puncture resistance, while also increasing seals at seams, terminations, and penetrations more than an EVOH barrier without geotextile reinforcement.
- Geo-Seal EV30 combined with a spray applied membrane and HPDE geocomposite protection course create a robust composite system at a reduced overall mil thickness.

Limitations

- More robust composite system options are offered by EPRO for sites with elevated risk or more complex applications.
- Not appropriate for sites also requiring waterproofing.

Technical Data

Properties: See physical properties table

Coverages: One roll covers 1800 square feet, not including overlaps or waste

Specification Writer: Contact EPRO before writing specifications on this product

Installation

Preparation: Please refer to manufacturer's specifications for substrate requirements. Rolls should be inspected for damage prior to application.

Application: Please refer to manufacturer's specifications. Overlap the seams of Geo-Seal EV30 a minimum of 6" and apply 60 mils of Geo-Seal CORE in the seam overlap.

Availability and Packaging

Contact a local EPRO installer or authorized applicator (www.eproinc.com).

Roll Size: 12' x 150' unfolded rolls, 150 lbs.

Warranty

Limited Warranty: EPRO Services, Inc. believes to the best of its knowledge that performance tables are accurate and reliable. EPRO warrants this product to be free from defects. EPRO makes no other warranties with respect to this product, express or implied, including without limitation the implied warranties of MERCHANTABILITY OR FITNESS FOR PARTICULAR PURPOSE. EPRO's liability shall be limited in all events to supplying sufficient product to repair the specific areas to which defective product has been applied. EPRO shall have no other liability, including liability for incidental or resultant damages, whether due to breach of warranty or negligence. This warranty may not be modified or extended by representatives of EPRO or its distributors.

Equipment

Seaming: AD-55 Sprayer, available through EPRO for application of Geo-Seal CORE in seam overlaps.

Smoke Testing: EPRO Smoke Test Machine for underslab applications.

Technical Services and Information

Complete technical services and information are available by contacting EPRO at 800.882.1896 or www.eproinc.com.



Geo-Seal® EV30

Typical Physical Properties

Physical Property	Test Method	Value
Film Material.....		Polyethylene & EVOH
Film Color.....		White/Gray
Weight.....		402.5 g/m ²
Film Thickness.....		31 Mil
Water Vapor Permeance.....	ASTM E96	0.035 perms
Water Vapor Transmission.....	ASTM E96B	0.014 grains/h-ft ²
Tensile Strength.....	ASTM D882	55 lbf
Elongation.....	ASTM D882	587%
Puncture Resistance.....	ASTM D1709	2255 grams
Life Expectancy.....	ASTM E154	Infinite
Classification.....	ASTM E1745	Class A, B & C

Dimensions: 12' x 150'

Weight: 150 lbs.