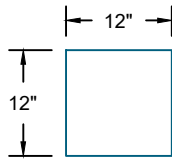


STEP 1:
3/4" FILLET OF PM SEALANT APPLIED TO
INSIDE CORNERS VERTICALLY AND
HORIZONTALLY TO RAW CONCRETE -
ALLOW PM DETAIL SEALANT TO CURE FOR
2 HOURS BEFORE CORNER APPLICATION

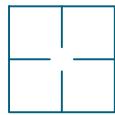
STEP 2:
PREPARE CONCRETE SURFACE
WITH PRIMETAK PRIMER

STEP 3:
1) CUT PRIMETAK SQUARE
(12"X12") AND FOLLOW
STEPS A, B, AND C.
2) APPLY SQUARE TO
CORNER, ADHERE
HORIZONTAL LEG, AND
WRAP VERTICAL FLAP
AROUND CORNER.

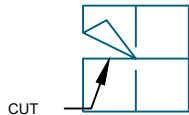
STEP A:
CUT A 12"X12"
PRIMETAK SQUARE



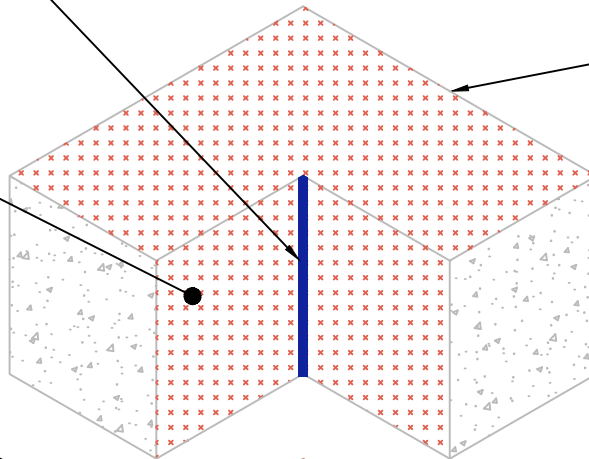
STEP B:
FOLD THE SQUARE IN HALF
IN BOTH DIRECTIONS TO
FIND THE CENTER OF THE
PRIMETAK SQUARE



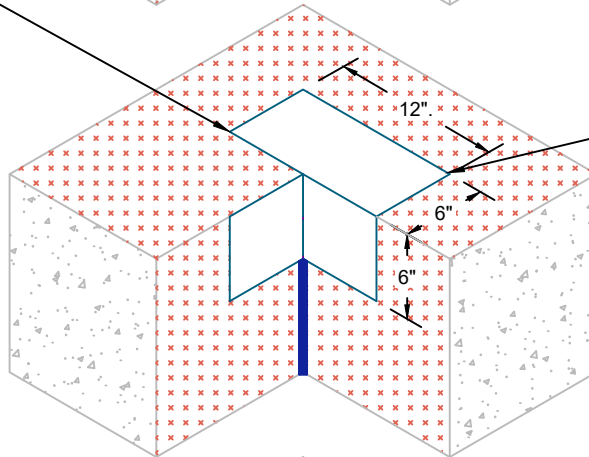
STEP C:
CUT ONE FOLD LINE TO
THE CENTER OF THE
PRIMETAK SQUARE



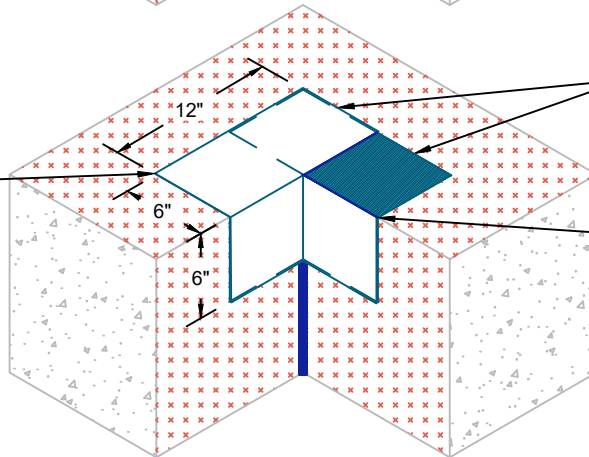
STEP 4:
1) CUT PRIMETAK SQUARE (12"X12")
AND FOLLOW STEPS A, B, AND C.
2) APPLY SQUARE TO CORNER,
ADHERE HORIZONTAL LEG AND
EXTEND OVER PRIMETAK, AND
WRAP VERTICAL FLAP AROUND
CORNER AND ADHERE OVER
PRIMETAK



APPROVED
SUBSTRATE



PRIMETAK
MEMBRANE



PRIMETAK
MEMBRANE

STEP 5:
APPLY PM
SEALANT TO CUT
EDGES AND
TERMINATIONS
OF PRIMETAK
MEMBRANE

G:\My Drive\Epro Master Folder\Drafting\Details\Walls\Primetak\55.381.4 CORNER - TOPSIDE - FIELD FORMED.dwg [Detail] April 27, 2021 - 8:18am

CORNER - TOPSIDE - INSIDE - FULLY ADHERED FIELD FORMED



SYSTEM NAME

PRIMETAK

DRAFTER

RJT

DRAWING NUMBER

55.381.4

DATE

4/05/2021

PRIMETAK

AS A SUPPLIER OF FINISHED PRODUCTS ONLY, EPRO SERVICES, INC. DOES NOT ASSUME RESPONSIBILITY FOR ERRORS IN DESIGN, ENGINEERING OR DIMENSIONS. THE PROJECT TEAM MUST VERIFY ALL DIMENSIONS AND SUITABILITY OF DETAILS. THE PRODUCTS LISTED ARE TRADEMARKS OF EPRO SERVICES, INC.

NTS

PAGE 1 OF 1