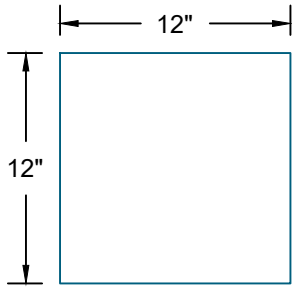
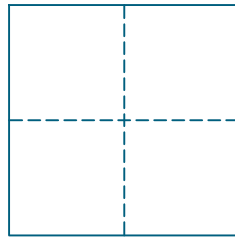


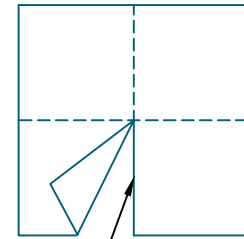
STEP 1:
CUT A 12"X12"
PRIMETAK SQUARE



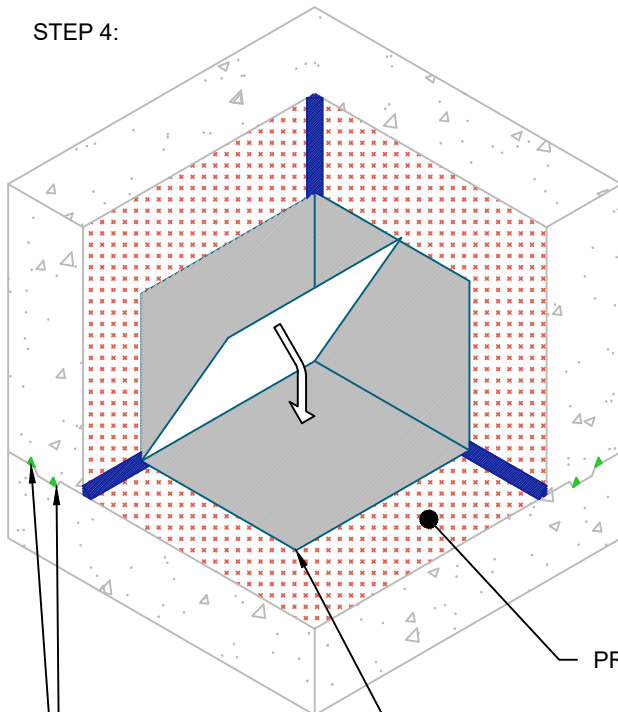
STEP 2:
FOLD THE SQUARE IN
HALF IN BOTH
DIRECTIONS TO FIND
THE CENTER OF THE
PRIMETAK SQUARE



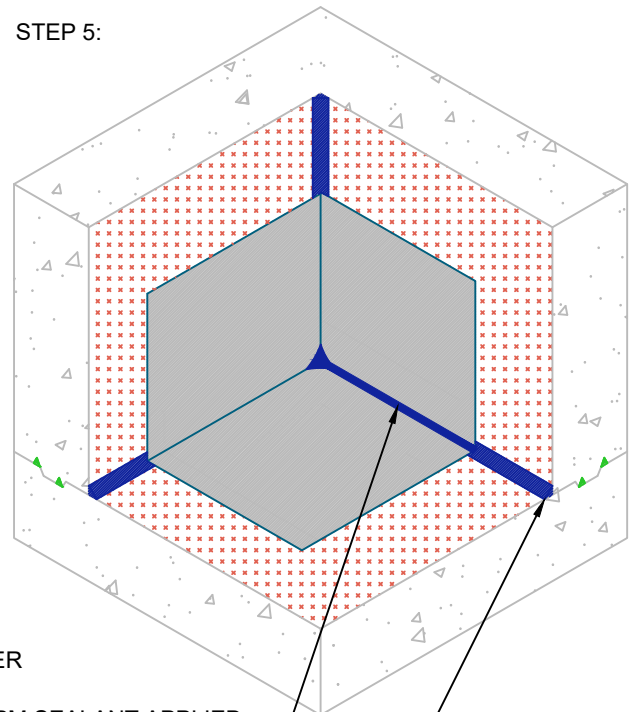
STEP 3:
CUT ONE FOLD LINE TO
THE CENTER OF THE
PRIMETAK SQUARE



STEP 4:



STEP 5:



BENTOTAK
(1 1/4" MIN. CONCRETE COVER AND 1 1/4"
MIN. DISTANCE BETWEEN STRIPS)

PIECE OF PRIMETAK
MEMBRANE CUT
AND FIT TO CORNER

PRIMETAK PRIMER

PM SEALANT APPLIED
TO CUT EDGE AND
TERMINATIONS OF
PRIMETAK MEMBRANE

3/4" FILLET OF PM SEALANT APPLIED
TO INSIDE CORNERS VERTICALLY AND
HORIZONTALLY TO RAW CONCRETE
- ALLOW PM SEALANT TO CURE FOR 2
HOURS BEFORE CORNER APPLICATION

NOTE:
DO NOT APPLY
PRIMETAK PRIMER
UNDER PM SEALANT

G:\My Drive\Epro Master Folder\Drafting\Details\Walls\Primetak\55.262.2 CORNER - INSIDE - FULLY ADHERED FIELD FORMED.dwg [Detail] April 27, 2021 - 9:21am

CORNER - INSIDE - FULLY ADHERED FIELD FORMED



SYSTEM NAME	DRAWING NUMBER
PRIMETAK	55.262.2
DRAFTER	DATE
RJT	4/26/2021

PRIMETAK

AS A SUPPLIER OF FINISHED PRODUCTS ONLY, EPRO SERVICES, INC. DOES NOT ASSUME RESPONSIBILITY FOR ERRORS IN DESIGN, ENGINEERING OR DIMENSIONS. THE PROJECT TEAM MUST VERIFY ALL DIMENSIONS AND SUITABILITY OF DETAILS. THE PRODUCTS LISTED ARE TRADEMARKS OF EPRO SERVICES, INC.

NTS

PAGE 1 OF 1