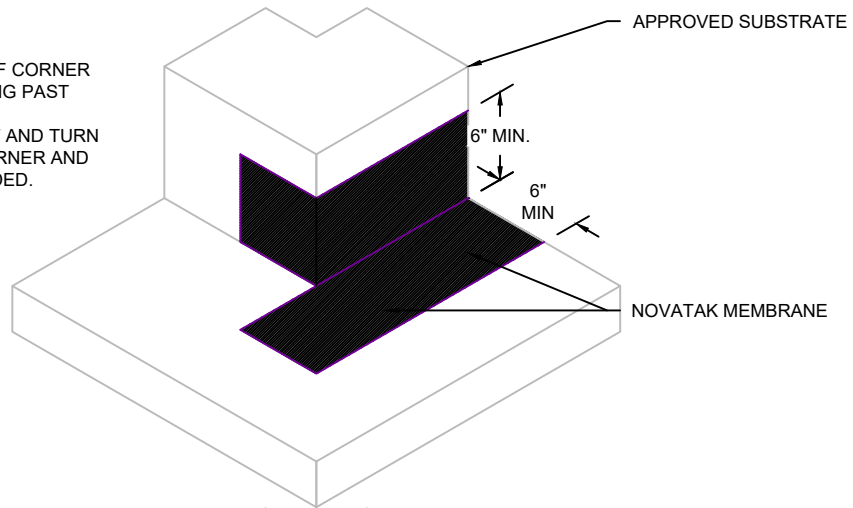
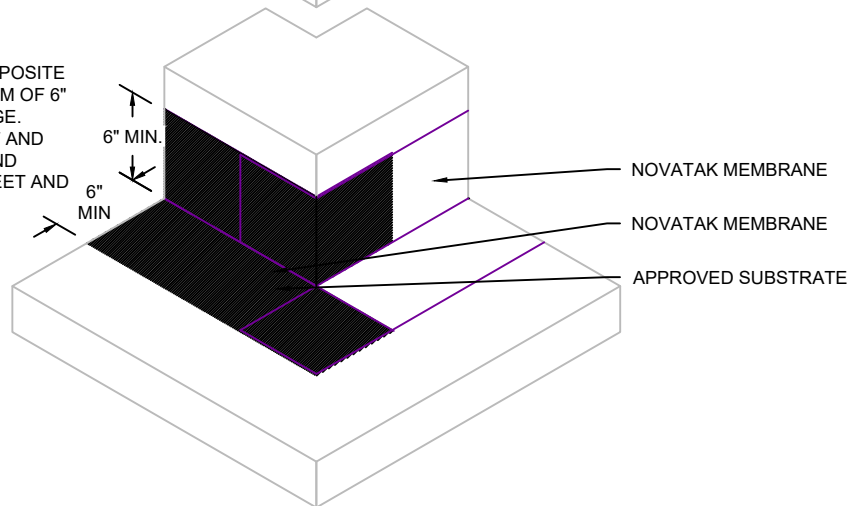


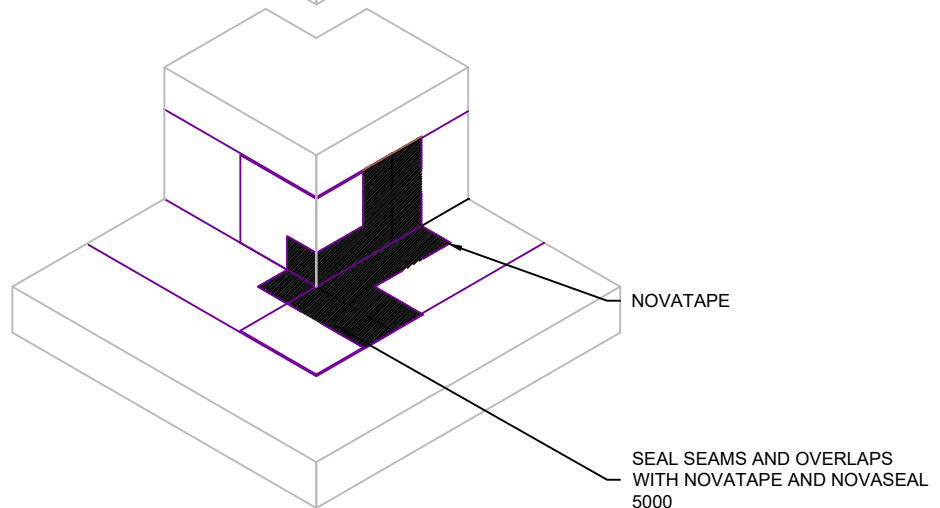
STEP 1:  
 APPLY NOVATAK TO ONE SIDE OF CORNER  
 WITH A MINIMUM OF 6" EXTENDING PAST  
 CORNER'S EDGE.  
 CUT FOLD AT BOTTOM OF SHEET AND TURN  
 VERTICAL SECTION AROUND CORNER AND  
 LEAVE HORIZONTAL LEG EXTENDED.



STEP 2:  
 APPLY SECOND NOVATAK TO OPPOSITE  
 SIDE OF CORNER WITH A MINIMUM OF 6"  
 EXTENDING PAST CORNER'S EDGE.  
 CUT FOLD AT BOTTOM OF SHEET AND  
 TURN VERTICAL SECTION AROUND  
 CORNER TO OVERLAP FIRST SHEET AND  
 OVERLAP HORIZONTAL LEGS.



STEP 3:  
 APPLY NOVATAPE AT THE SEAM  
 BETWEEN THE TWO SHEETS



G:\My Drive\Epro Master Folder\Drafting\Details\Shoring\Novatak\50.381.2 OUTSIDE CORNER.dwg [Detail] June 01, 2020 - 10:52am

## OUTSIDE CORNER



| SYSTEM NAME | DRAWING NUMBER |
|-------------|----------------|
| NOVATAK     | 50.381.2       |
| DRAFTER     | DATE           |
| RJT         | 5/26/2020      |

# NOVATAK

AS A SUPPLIER OF FINISHED RPRODUCTS ONLY, EPRO SERVICES, INC. DOES NOT ASSUME RESPONSIBILITY FOR ERRORS IN DESIGN, ENGINEERING OR DIMENSIONS. THE PROJECT TEAM MUST VERIFY ALL DIMENSIONS AND SUITABILITY OF DETAILS. THE PRODUCTS LISTED ARE TRADEMARKS OF EPRO SERVICES, INC.

NTS

PAGE 1 OF 1