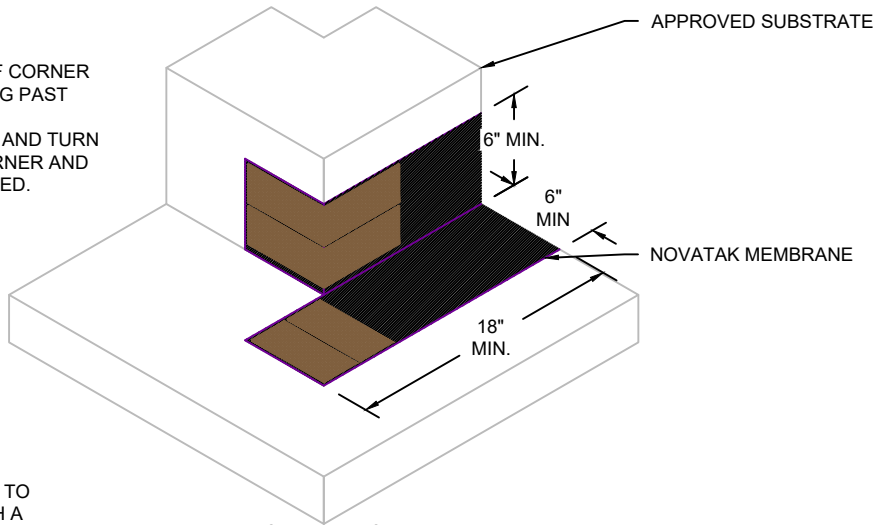
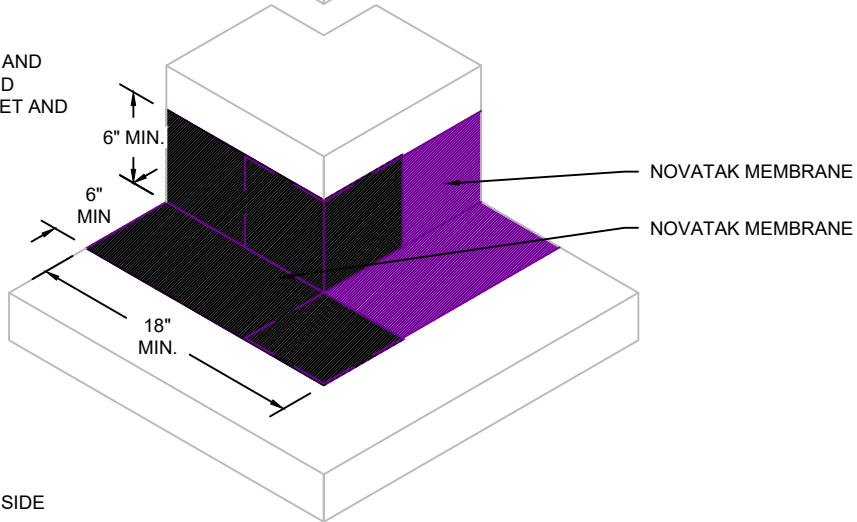


STEP 1:
 APPLY NOVATAK TO ONE SIDE OF CORNER
 WITH A MINIMUM OF 6" EXTENDING PAST
 CORNER'S EDGE.
 CUT FOLD AT BOTTOM OF SHEET AND TURN
 VERTICAL SECTION AROUND CORNER AND
 LEAVE HORIZONTAL LEG EXTENDED.



STEP 2:
 APPLY NOVATAPE D TO
 AREAS COVERED BY
 SECOND SHEET

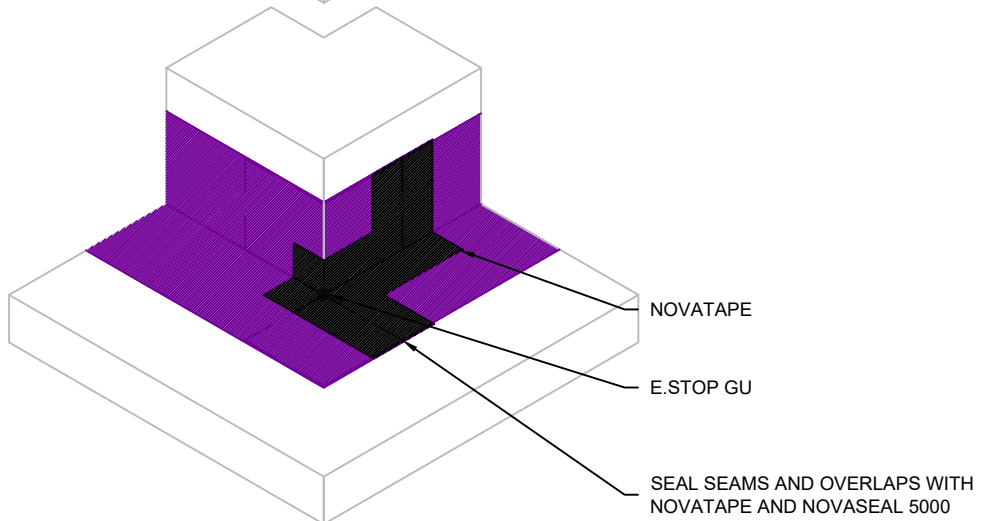
STEP 3:
 APPLY SECOND NOVATAK SHEET TO
 OPPOSITE SIDE OF CORNER WITH A
 MINIMUM OF 6" EXTENDING PAST
 CORNER'S EDGE.
 CUT FOLD AT BOTTOM OF SHEET AND
 TURN VERTICAL SECTION AROUND
 CORNER TO OVERLAP FIRST SHEET AND
 OVERLAP HORIZONTAL LEGS.



STEP 4:
 REMOVE RELEASE LINER
 FROM NOVATAPE D AND
 ADHERE SECOND SHEET
 TO FIRST SHEET



STEP 5:
 APPLY BEAD OF E.STOP GU TO INSIDE
 CORNER OF DETAIL

STEP 6:
 APPLY NOVATAPE AT THE SEAM
 BETWEEN THE TWO SHEETS



G:\My Drive\Epro Master Folder\Drafting\Details\Shoring\Novatak\50.381.2 CORNER - OUTSIDE - FIELD FORMED.dwg [Detail] July 01, 2021 - 10:01am

CORNER - OUTSIDE - FIELD FORMED

	SYSTEM NAME	DRAWING NUMBER	
	NOVATAK	50.381.2	
	DRAFTER	DATE	
	RJT	3/16/2021	

AS A SUPPLIER OF FINISHED RPRODUCTS ONLY, EPRO SERVICES, INC. DOES NOT ASSUME RESPONSIBILITY FOR ERRORS IN DESIGN, ENGINEERING OR DIMENSIONS. THE PROJECT TEAM MUST VERIFY ALL DIMENSIONS AND SUITABILITY OF DETAILS. THE PRODUCTS LISTED ARE TRADEMARKS OF EPRO SERVICES, INC.

NTS

PAGE 1 OF 1