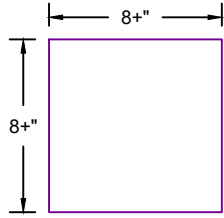
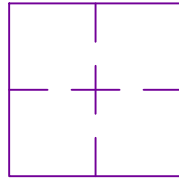


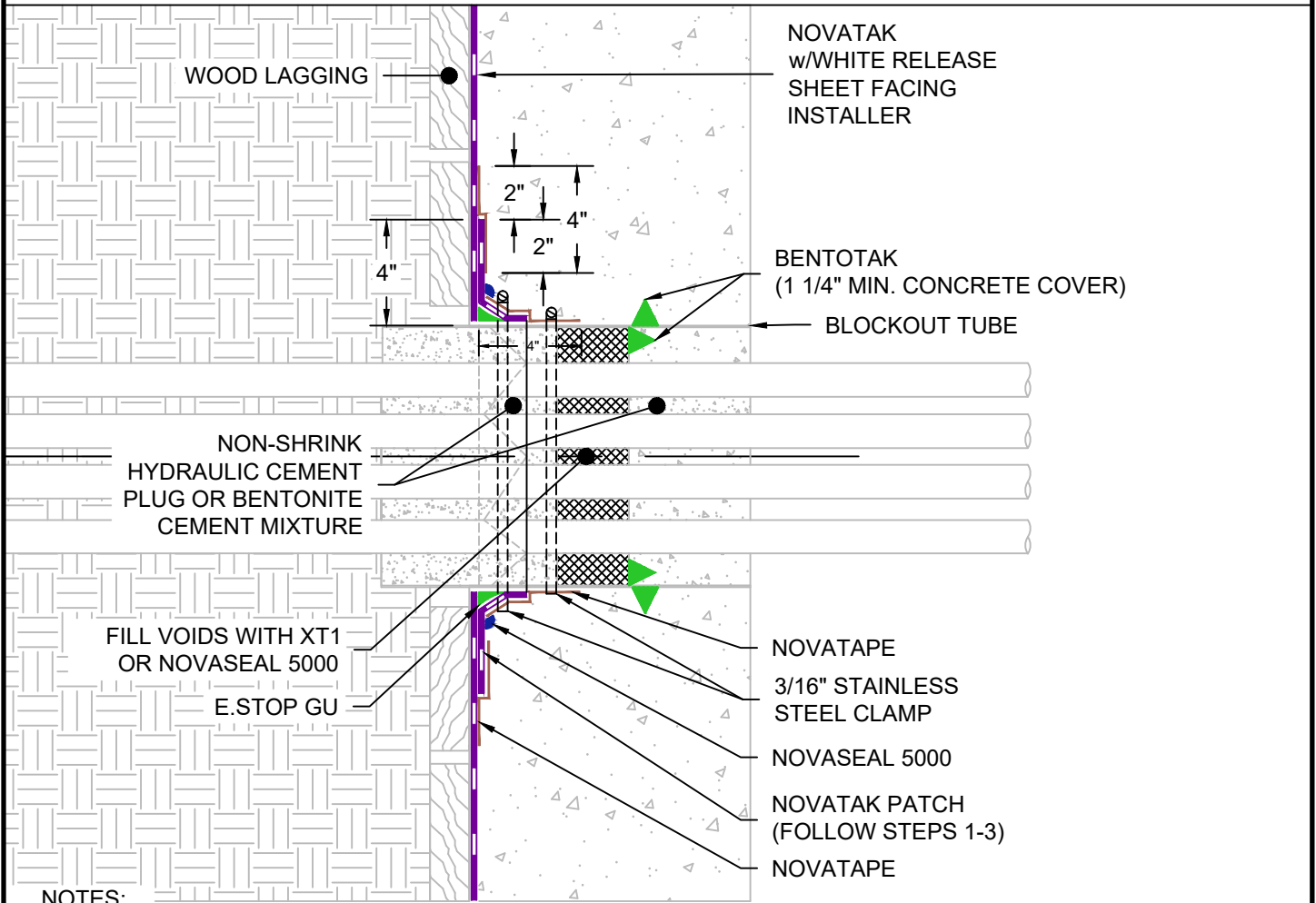
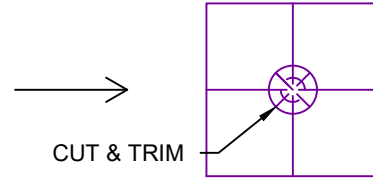
STEP 1:
CUT A SQUARE PATCH OF NOVATAK
8" WIDER THAN THE WIDTH OF THE
PENETRATION



STEP 2:
FIND THE CENTER OF THE
SQUARE BY FOLDING IT
INTO QUARTERS



STEP 3:
STAR-CUT CENTER OF SQUARE TO
THE WIDTH OF THE PENETRATION
(TRIM FLANGES TO 2" MAX. LENGTH)



NOTES:

- 1) NOVATAK MEMBRANE BOOT MUST BE FIT SNUG AROUND CONDUIT/PIPE WITHOUT FOLDING OR FALLING DOWN. NOVATAPE MUST BE USED TO COMPLETELY SEAL BETWEEN BOOT AND PIPE, TIGHTEN HOSE CLAMP AS TIGHT AS POSSIBLE WITHOUT DAMAGING THE MEMBRANE
- 2) SPACE PENETRATIONS A MINIMUM OF 6" FROM SLAB EDGE, CORNERS, WALLS, OR OTHER PENETRATIONS.

G:\My Drive\Epro Master Folder\Drafting\Details\Shoring\Novatak\50.328.1 BLINDSIDE VERTICAL PENETRATION - MULTI-CONDUIT/PIPE BUNDLE WITH LIMITED ANNULAR SPACE.dwg [Detail] July 01, 2021 - 10:06am

BLINDSIDE VERTICAL PENETRATION - WOOD LAGGING - MULTI-CONDUIT/PIPE BUNDLE WITH LIMITED ANNULAR SPACE

	SYSTEM NAME	DRAWING NUMBER	<h1>NOVATAK</h1>
	NOVATAK	50.328.1	
	DRAFTER	DATE	
	RJT	6/30/2021	

AS A SUPPLIER OF FINISHED PRODUCTS ONLY, EPRO SERVICES, INC. DOES NOT ASSUME RESPONSIBILITY FOR ERRORS IN DESIGN, ENGINEERING OR DIMENSIONS. THE PROJECT TEAM MUST VERIFY ALL DIMENSIONS AND SUITABILITY OF DETAILS. THE PRODUCTS LISTED ARE TRADEMARKS OF EPRO SERVICES, INC.

NTS

PAGE 1 OF 1