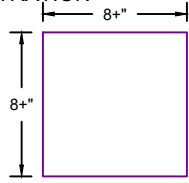
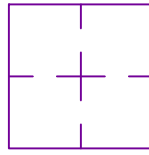


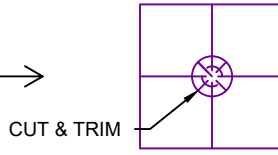
STEP 1:
CUT A SQUARE PATCH OF NOVATAK 8"
WIDER THAN THE WIDTH OF THE
PENETRATION



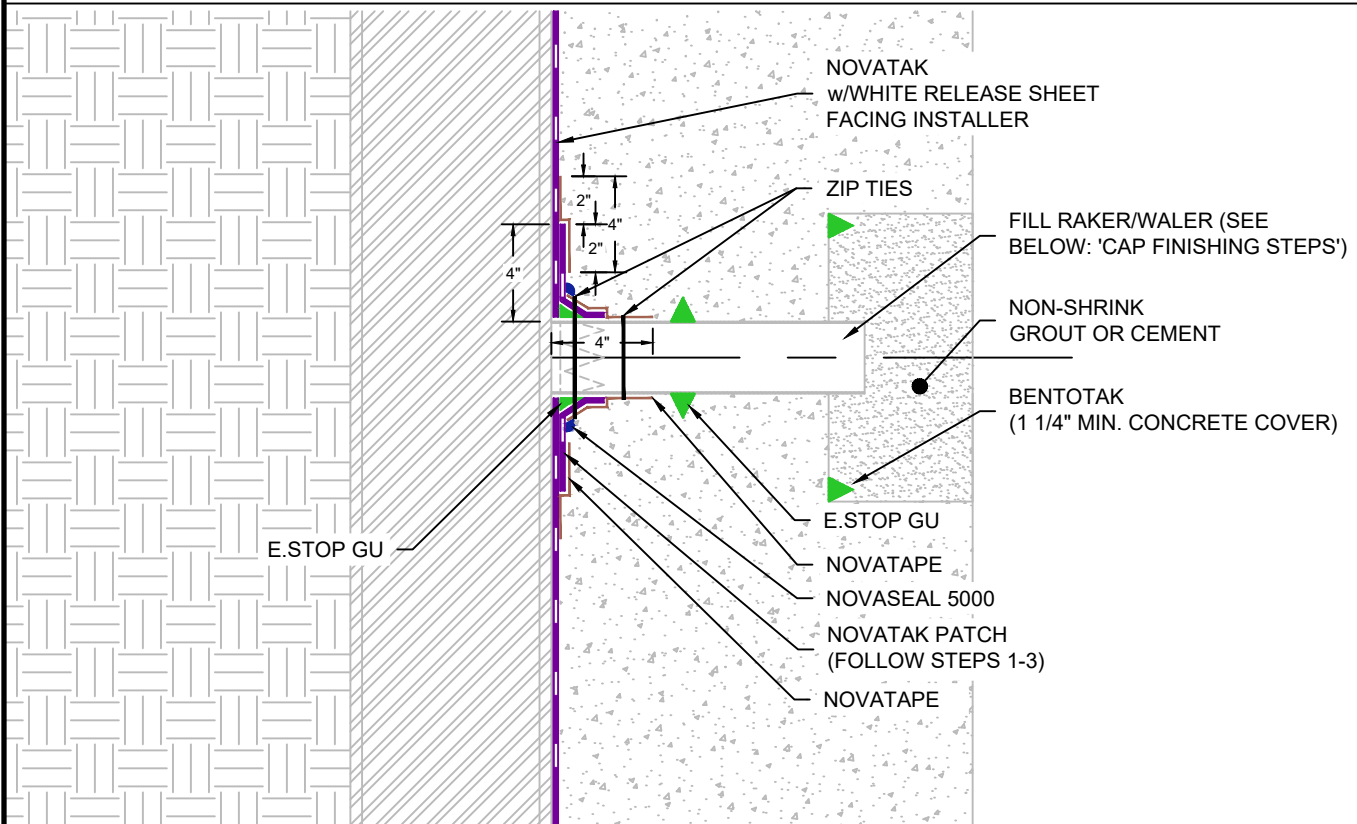
STEP 2:
FIND THE CENTER OF THE SQUARE
BY FOLDING IT INTO QUARTERS



STEP 3:
STAR-CUT CENTER OF SQUARE TO
THE WIDTH OF THE PENETRATION
(TRIM FLANGES TO 2" MAX. LENGTH)



CUT & TRIM



RAKER / WALER CAP FINISHINGS STEPS:

- 1) BLOCKOUT OR SAW CUT A SQUARE OPENING A MINIMUM OF 6" FROM THE OUTSIDE OF THE RAKER/WALER -IF SAW CUT, BREAKOUT CONCRETE AROUND RAKER/WALER
- 2) CUT RAKER / WALER A MINIMUM OF 4" DOWN BELOW TOP OF SLAB
- 3) FILL BOTTOM OF RAKER PIPE WITH A MINIMUM OF 2" BENTONITE GRANULES OR BENTONITE-CEMENT MIX
- 4) FILL RAKER / WALER WITH NON-SHRINK HYDRAULIC GROUT OR CEMENT
- 5) APPLY BENTOTAK AROUND THE INNER PERIMETER OF BLOCKOUT/SAW CUT AREA
- 6) FILL BLOCKOUT/SAW CUT AREA WITH NON-SHRINK GROUT, CEMENT, OR SHOTCRETE

NOTES:

- 1) NOVATAK MEMBRANE BOOT MUST BE FIT SNUG AROUND RAKER/WALER WITHOUT FOLDING OR FALLING DOWN. NOVATAPE MUST BE USED TO COMPLETELY SEAL BETWEEN BOOT AND PILE, TIGHTEN ZIP TIES AS TIGHT AS POSSIBLE WITHOUT DAMAGING THE MEMBRANE
- 2) SPACE PENETRATIONS A MINIMUM OF 6" FROM SLAB EDGE, CORNERS, WALLS, OR OTHER PENETRATIONS.

G:\My Drive\Epro Master Folder\Drafting\Details\Shoring\Novatak\50.325.1 BLINDSIDE VERTICAL PENETRATION - RAKER WALER.dwg [Detail] July 01, 2021 - 9:52am

BLINDSIDE VERTICAL PENETRATION - RAKER / WALER

	SYSTEM NAME	DRAWING NUMBER	
	NOVATAK	50.325.1	
	DRAFTER	DATE	
	RJT	6/30/2021	

AS A SUPPLIER OF FINISHED RPRODUCTS ONLY, EPRO SERVICES, INC. DOES NOT ASSUME RESPONSIBILITY FOR ERRORS IN DESIGN, ENGINEERING OR DIMENSIONS. THE PROJECT TEAM MUST VERIFY ALL DIMENSIONS AND SUITABILITY OF DETAILS. THE PRODUCTS LISTED ARE TRADEMARKS OF EPRO SERVICES, INC.

NTS

PAGE 1 OF 1