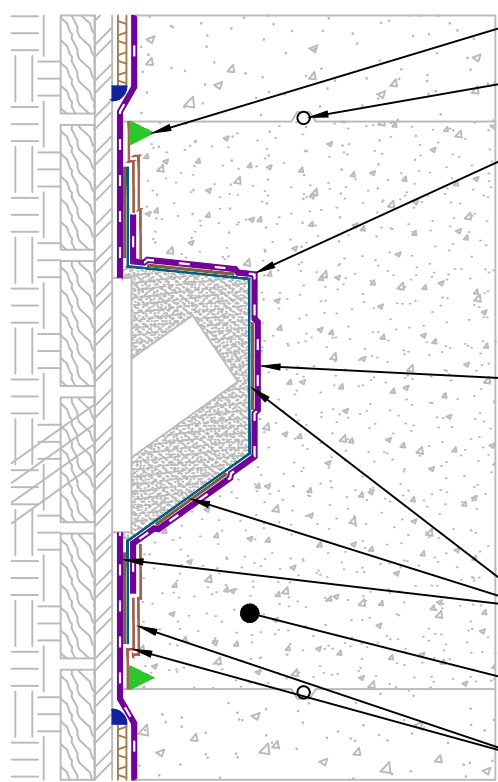


- E.DRAIN 6000
- NOVATAK w/WHITE RELEASE SHEET FACING INSTALLER
- E.DRAIN 6000 TO BE SEALED WITH CANT BEAD OF NOVASEAL 5000 AROUND FULL PERIMETER OF THE TIEBACK
- 24" SONOTUBE OR BOXOUT (18" MIN.)
- TIEBACK CABLES, COLLAR, AND BRACKET
- 1) PROTECT MEMBRANE WITH WET FIRE BLANKET, BURN OFF TIEBACK CABLES AND REMOVE COLLAR.
- 2) FILL TIEBACK VOID WITH NON-SHRINK GROUT
- PLASTIC SHEETING
- FOAM TO CREATE KEYWAY FOR INJECTABLE WATERSTOP HOSE (HYDROSTATIC)
- TERMINATE E.DRAIN 6000 OUTSIDE OF BLOCKOUT AREA


1
2



- BENTOTAK
- INJECTABLE WATERSTOP HOSE WITH PORTS (HYDROSTATIC)
- NOVATAK TARGET SHEET
- 1) COAT / FILL TIEBACK WITH NOVASEAL 5000 TO NOVATAK SURFACE
- 2) COVER WITH FIELD TIEBACK BOOT COVERED WITH 4" WALL FLANGE
- 3) ADHERE BOOT TO NOVATAK USING REINFORCED NOVATAPE SEAM AROUND ENTIRE BOOT
- 4) FILL TIEBACK BOOT WITH CLOSED CELL SPRAY FOAM
- 5) SEAL FOAM INJECTION HOLES WITH NOVATAPE
- 6) ADHERE NOVATAK WITH NOVATAPE D OVER ENTIRE TIEBACK BOOT SURFACE
- NOVATAPE D
- CONCRETE FILL (SHOTCRETE CANNOT BE USED IN HYDROSTATIC CONDITIONS)
- NOVATAPE

G:\My Drive\Epro Master Folder\Drafting\Details\Shoring\Novatak\50.323.2 BLINDSIDE VERTICAL TIEBACK - DETENSIONED - 24 SONOTUBE OR FRAMED BLOCKOUT (MIN. 18).dwg [Detail] July 01, 2021 - 11:17am

BLINDSIDE VERTICAL TIEBACK - FIELD FORMED - DETENSIONED - 24" SONOTUBE OR FRAMED BLOCKOUT (MIN. 18")

	SYSTEM NAME	DRAWING NUMBER	<h1>NOVATAK</h1>
	NOVATAK	50.323.2	
	DRAFTER	DATE	
	RJT	07/01/2021	

AS A SUPPLIER OF FINISHED RPRODUCTS ONLY, EPRO SERVICES, INC. DOES NOT ASSUME RESPONSIBILITY FOR ERRORS IN DESIGN, ENGINEERING OR DIMENSIONS. THE PROJECT TEAM MUST VERIFY ALL DIMENSIONS AND SUITABILITY OF DETAILS. THE PRODUCTS LISTED ARE TRADEMARKS OF EPRO SERVICES, INC.