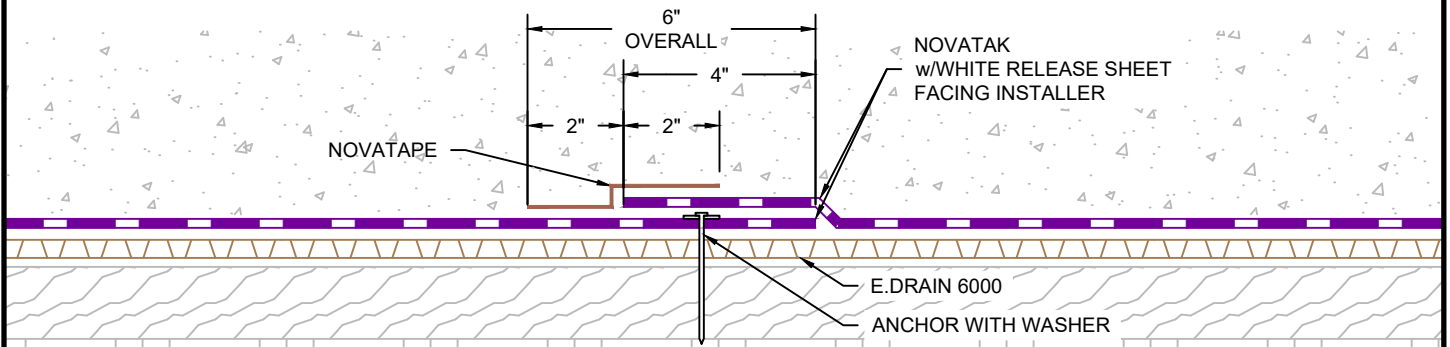


### SANDWICH SEAM

Ⓐ

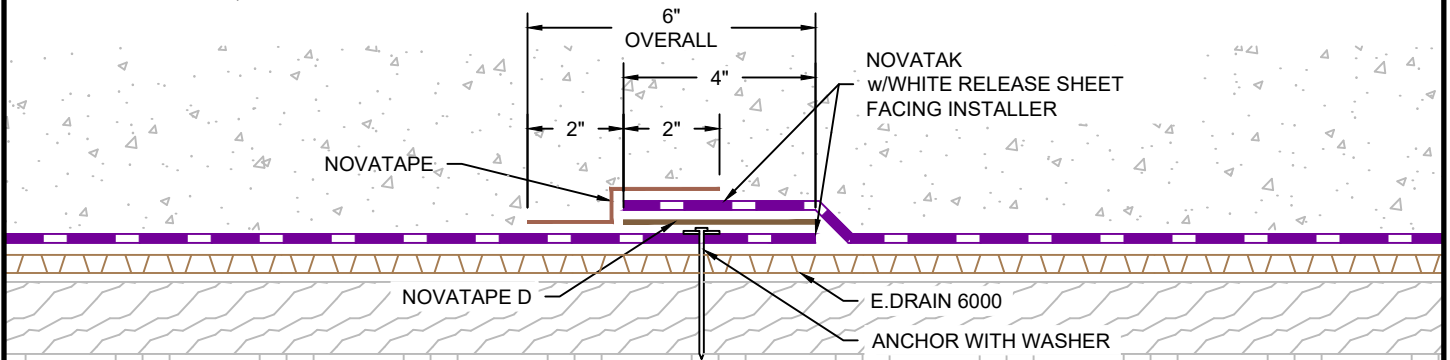
- 1) FASTEN TO LAGGING THROUGH OVERLAP SEAM WITH WASHERED ANCHOR
- 2) APPLY NOVATAPE D TO LOCATION OF OVERLAP SEAM
- 3) LINE UP TOP LAYER OF NOVATAK TO BOTTOM SHEET (MIN 4")
- 4) REMOVE RELEASE LINER COVERING ADHESIVE ON NOVATAPE D AND ADHERE SHEETS TOGETHER
- 5) ROLL STEEL ROLLER OVER TOP SHEET SEAM SEVERAL TIMES WHILE APPLYING SIGNIFICANT PRESSURE
- 6) VERIFY SEAM IS COMPLETELY BONDED
- 7) REPAIR ANY FISHMOUTHS OR POOR SEAM BONDS WITH NOVATAPE AND NOVASEAL 5000



### POSITIVE LAP SEAM

Ⓑ

- 1) FASTEN TO LAGGING THROUGH OVERLAP SEAM WITH WASHERED ANCHOR
- 2) LINE UP TOP LAYER OF NOVATAK TO BOTTOM SHEET (MIN 4")
- 3) REMOVE NOVATAPE RELEASE LINER COVERING ADHESIVE
- 4) POSITION NOVATAPE EVENLY CENTERED OVER CENTER OF SEAM AND ROLL OUT ONTO SEAM
- 5) ROLL STEEL ROLLER OVER TOP SHEET SEAM SEVERAL TIMES WHILE APPLYING SIGNIFICANT PRESSURE
- 6) VERIFY SEAM IS COMPLETELY BONDED
- 7) REPAIR ANY FISHMOUTHS OR POOR SEAM BONDS WITH NOVATAPE AND NOVASEAL 5000





### REINFORCED SEAM

Ⓒ

\*REINFORCED SEAM REQUIRED FOR SHOTCRETE APPLICATIONS AND HYDROSTATIC WATER TABLE CONDITIONS

G:\My Drive\Epro Master Folder\Drafting\Details\Shoring\Novatak\50.310.6 VERTICAL NOVATAK LAP SEAMS - PLAN VIEW.dwg [Detail] July 01, 2021 - 9:53am

## VERTICAL LAP SEAMS - PLAN VIEW

	SYSTEM NAME	DRAWING NUMBER	
	NOVATAK	50.310.6	
	DRAFTER	DATE	
	RJT	6/30//2021	

AS A SUPPLIER OF FINISHED RPRODUCTS ONLY, EPRO SERVICES, INC. DOES NOT ASSUME RESPONSIBILITY FOR ERRORS IN DESIGN, ENGINEERING OR DIMENSIONS. THE PROJECT TEAM MUST VERIFY ALL DIMENSIONS AND SUITABILITY OF DETAILS. THE PRODUCTS LISTED ARE TRADEMARKS OF EPRO SERVICES, INC.

NTS

PAGE 1 OF 1