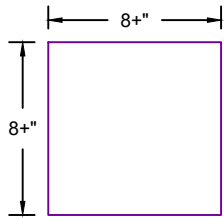
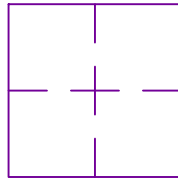


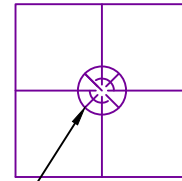
STEP 1:  
CUT A SQUARE PATCH OF  
NOVATAK 8" WIDER THAN THE  
WIDTH OF THE PENETRATION



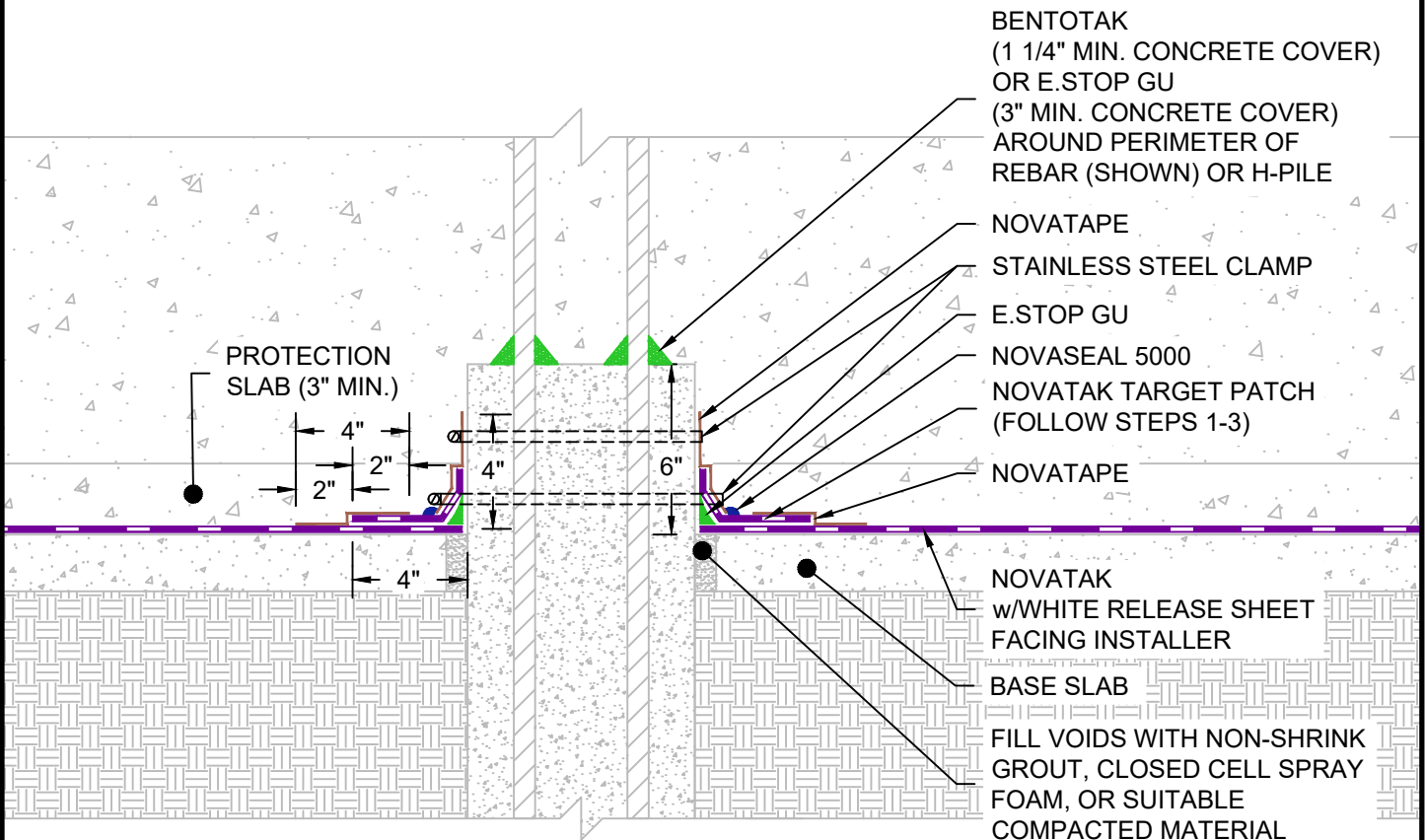
STEP 2:  
FIND THE CENTER OF THE  
SQUARE BY FOLDING IT  
INTO QUARTERS



STEP 3:  
STAR-CUT CENTER OF  
SQUARE TO THE WIDTH  
OF THE PENETRATION  
(TRIM FLANGES TO 2" MAX.  
LENGTH)



CUT & TRIM



NOTE:  
EXPOSED PORTION OF AUGER CAST  
PILE MUST BE FREE OF VOIDS AND  
HAVE A MINIMUM WOOD FLOAT FINISH

G:\My Drive\Epro Master Folder\Drafting\Details\Underslab\Novatak\50.122.3 UNDERSLAB PENETRATION - AUGER CAST PILE WITH BASE AND PROTECTION SLAB.dwg [Detail] July 01, 2021 - 8:30am

UNDERSLAB PENETRATION - AUGER CAST PILE WITH BASE & PROTECTION SLAB

	SYSTEM NAME	DRAWING NUMBER	
	NOVATAK	50.122.3	
	DRAFTER	DATE	
	RJT	6/30/2021	

AS A SUPPLIER OF FINISHED PRODUCTS ONLY, EPRO SERVICES, INC. DOES NOT ASSUME RESPONSIBILITY FOR ERRORS IN DESIGN, ENGINEERING OR DIMENSIONS. THE PROJECT TEAM MUST VERIFY ALL DIMENSIONS AND SUITABILITY OF DETAILS. THE PRODUCTS LISTED ARE TRADEMARKS OF EPRO SERVICES, INC.

NTS

PAGE 1 OF 1