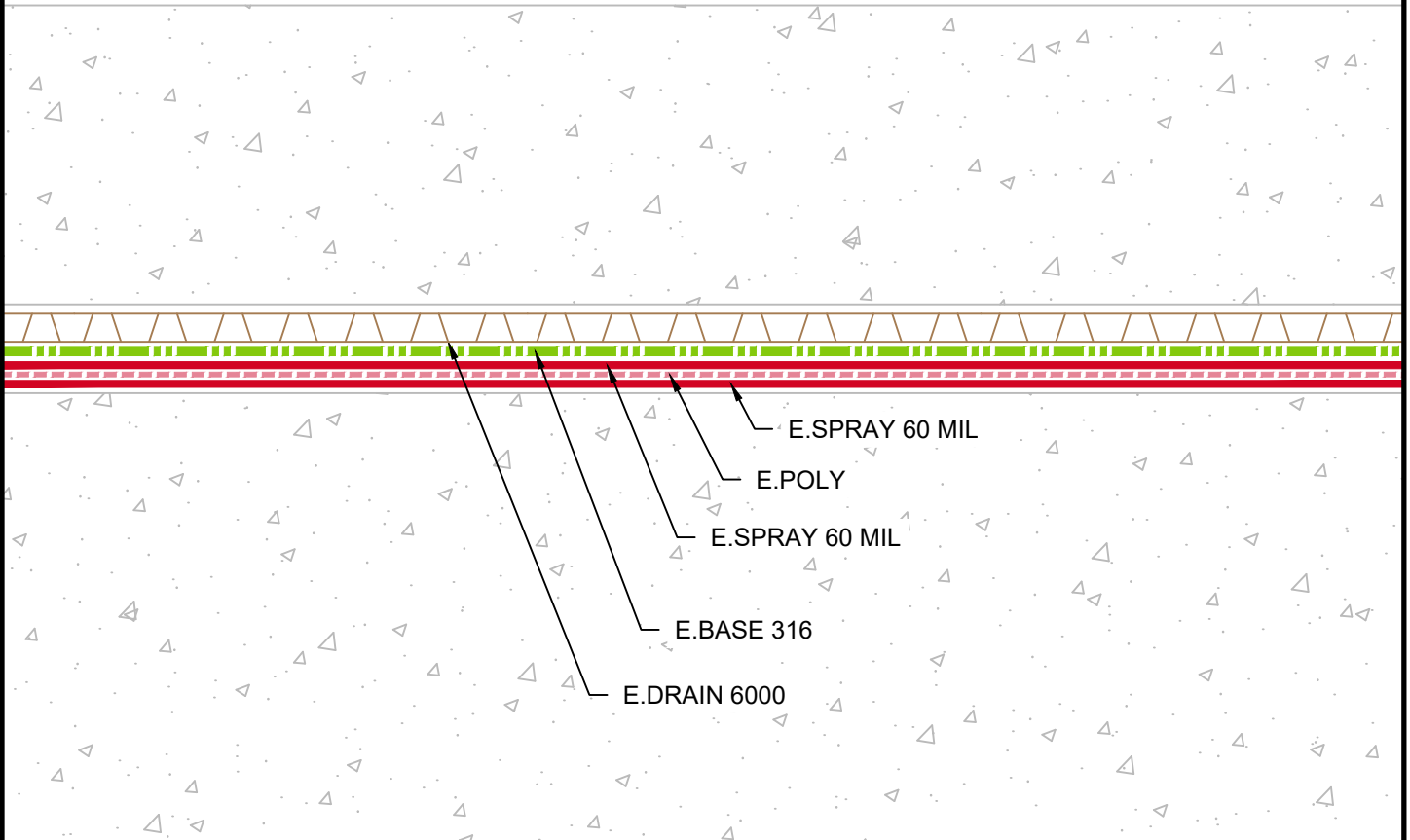




E.PROTECT+ DECK ASSEMBLY

w/E.SPRAY - POLYMER MODIFIED ASPHALT - 60 MIL
 w/E.POLY - POLYESTER FABRIC
 w/E.SPRAY - POLYMER MODIFIED ASPHALT - 60 MIL
 w/E.BASE 316 - THERMOPLASTIC MEMBRANE - 16 MIL
 TOTAL SYSTEM THICKNESS - 136MIL



G:\My Drive\Epro Master Folder\Drafting\Details\Decks\E.Protect+3.400.1 DECK ASSEMBLY.dwg [Detail] July 24, 2020 - 3:59pm

DECK ASSEMBLY

	SYSTEM NAME	DRAWING NUMBER	
	E.PROTECT+	3.400.1	
	DRAFTER	DATE	
	RJT	7/23/2020	

AS A SUPPLIER OF FINISHED RPRODUCTS ONLY, EPRO SERVICES, INC. DOES NOT ASSUME RESPONSIBILITY FOR ERRORS IN DESIGN, ENGINEERING OR DIMENSIONS. THE PROJECT TEAM MUST VERIFY ALL DIMENSIONS AND SUITABILITY OF DETAILS. THE PRODUCTS LISTED ARE TRADEMARKS OF EPRO SERVICES, INC.

NTS

PAGE 1 OF 1