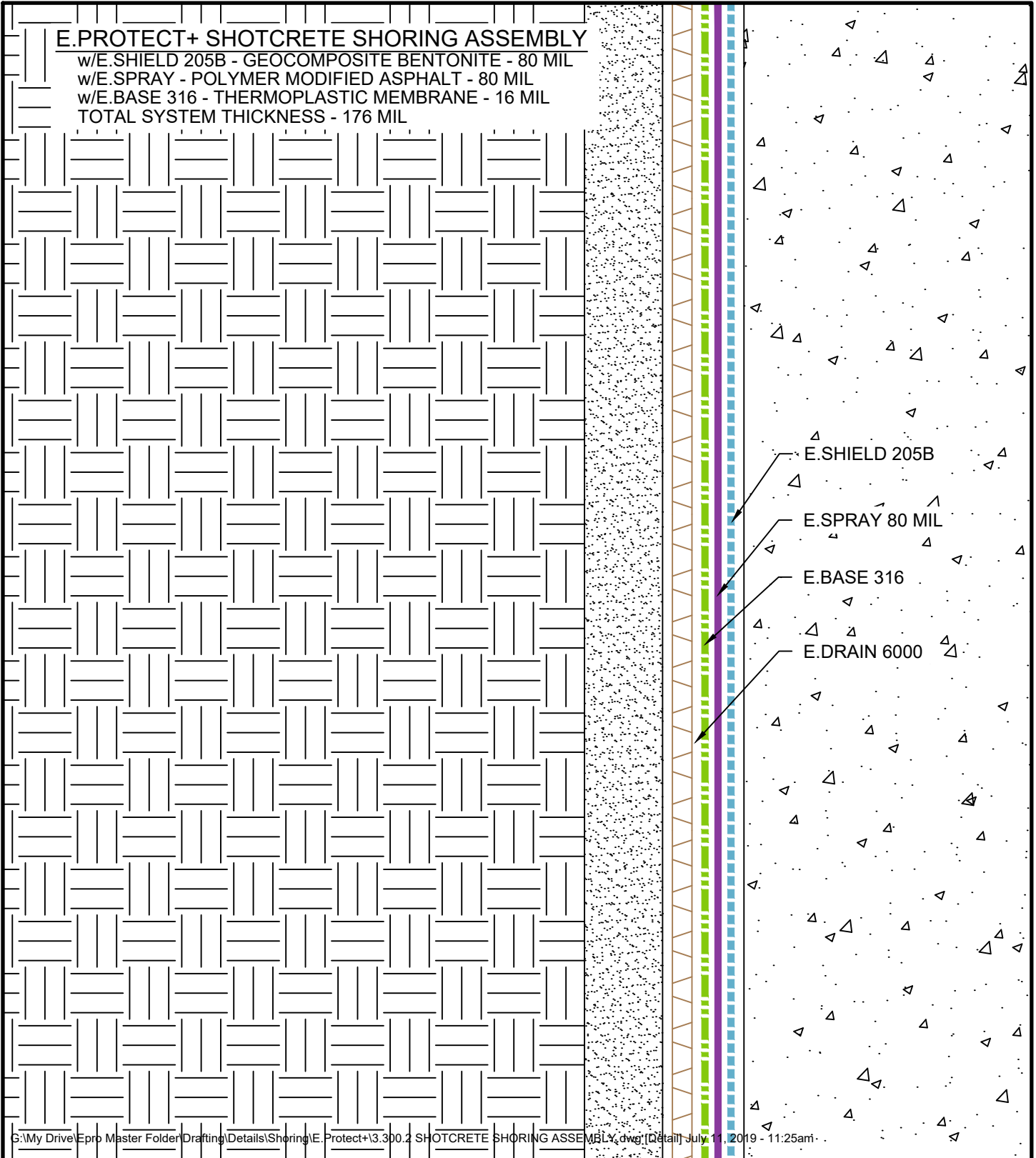


E.PROTECT+ SHOTCRETE SHORING ASSEMBLY

w/E.SHIELD 205B - GEOCOMPOSITE BENTONITE - 80 MIL
 w/E.SPRAY - POLYMER MODIFIED ASPHALT - 80 MIL
 w/E.BASE 316 - THERMOPLASTIC MEMBRANE - 16 MIL
 TOTAL SYSTEM THICKNESS - 176 MIL



E.SHIELD 205B



E.SPRAY 80 MIL

E.BASE 316

E.DRAIN 6000

G:\My Drive\epro Master Folder\Drafting\Details\Shoring\E.Protect+3.300.2 SHOTCRETE SHORING ASSEMBLY.dwg [Detail] July 11, 2019 - 11:25am

SHOTCRETE SHORING ASSEMBLY

	SYSTEM NAME	DRAWING NUMBER	
	E.PROTECT+	3.300.2	
	DRAFTER	DATE	
	RJT	07/11/19	

AS A SUPPLIER OF FINISHED PRODUCTS ONLY, EPRO SERVICES, INC. DOES NOT ASSUME RESPONSIBILITY FOR ERRORS IN DESIGN, ENGINEERING OR DIMENSIONS. THE PROJECT TEAM MUST VERIFY ALL DIMENSIONS AND SUITABILITY OF DETAILS. THE PRODUCTS LISTED ARE TRADEMARKS OF EPRO SERVICES, INC.

NTS

PAGE 1 OF 1