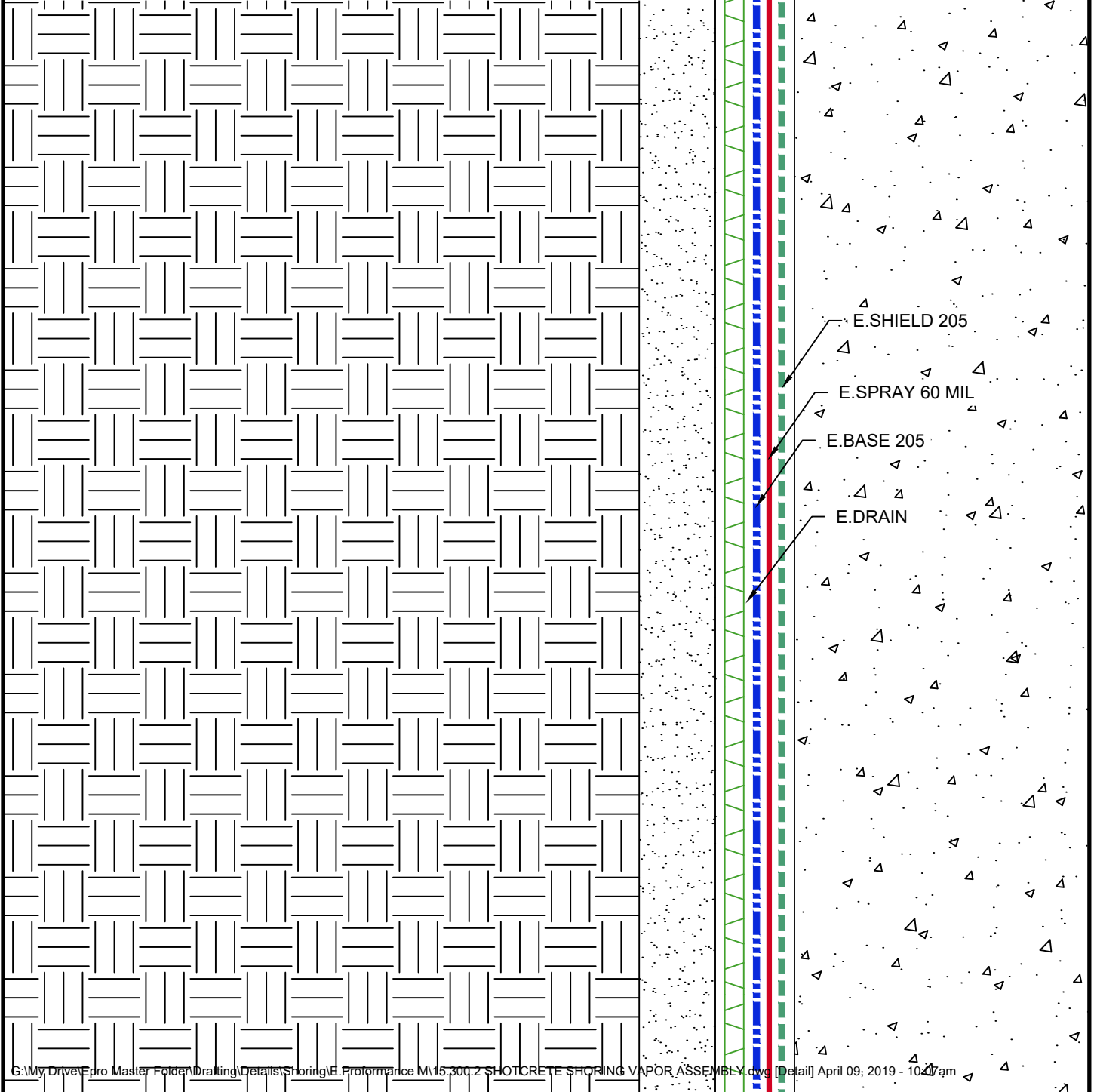


E.PROFORMANCE M SHOTCRETE SHORING VAPOR ASSEMBLY



w/E.SHIELD 205 - GEOCOMPOSITE SHEET - 18 MIL
 w/E.SPRAY - POLYMER MODIFIED ASPHALT - 60 MIL
 w/E.BASE 205 - GEOCOMPOSITE BASE CLOSURE - 18 MIL
TOTAL SYSTEM THICKNESS - 96 MIL



E.SHIELD 205
 E.SPRAY 60 MIL
 E.BASE 205
 E.DRAIN

G:\My Drive\epro Master Folder\Drafting\Details\Shoring\E.Proformance M\15.300.2 SHOTCRETE SHORING VAPOR ASSEMBLY.dwg [Detail] April 09, 2019 - 10:27am

SHOTCRETE SHORING VAPOR ASSEMBLY

	SYSTEM NAME	DRAWING NUMBER	
	E.PROFORMANCE M	15.300.2	
	DRAFTER	DATE	
	TSH	04/09/19	

AS A SUPPLIER OF FINISHED PRODUCTS ONLY, EPRO SERVICES, INC. DOES NOT ASSUME RESPONSIBILITY FOR ERRORS IN DESIGN, ENGINEERING OR DIMENSIONS. THE PROJECT TEAM MUST VERIFY ALL DIMENSIONS AND SUITABILITY OF DETAILS. THE PRODUCTS LISTED ARE TRADEMARKS OF EPRO SERVICES, INC.

NTS

PAGE 1 OF 1