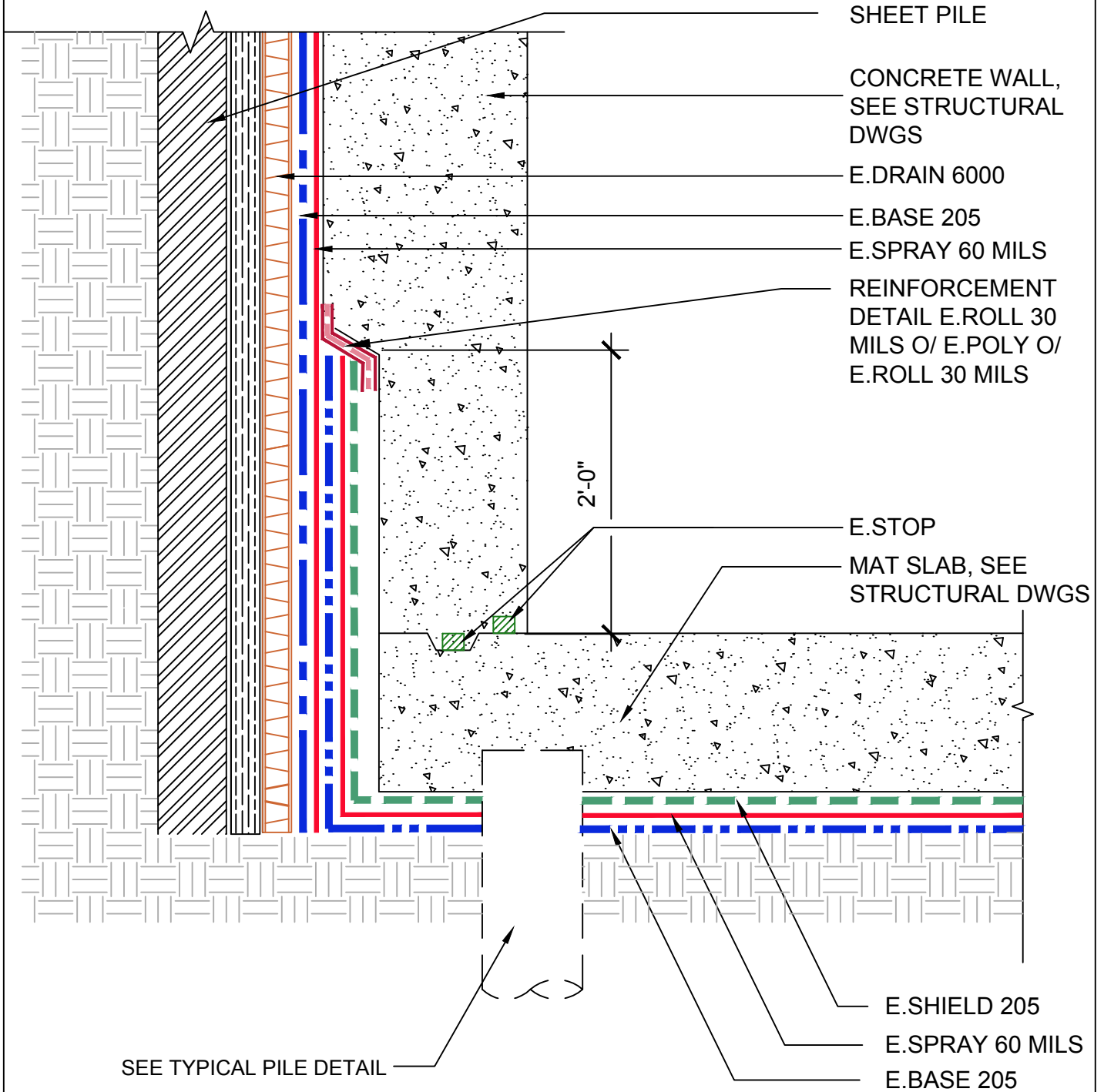


NOTE: WATERSTOPS MUST BE FULLY ENCAPSULATED WITH CONCRETE A MIN OF 3" ON BOTH SIDES



SYSTEM
E.PROFORMANCE

OLD REFERENCE

NOT
TO
SCALE

THICKNESS OF EPRO PRODUCTS ARE ENLARGED FOR CLARITY

**UNDERSLAB SLIPSHEET TRANSITION
MAT SLAB TO SHEET PILE SHORING
AND PILE FOUNDATION**

AS A SUPPLIER OF FINISHED PRODUCTS ONLY, EPRO SERVICES, INC. DOES NOT ASSUME RESPONSIBILITY FOR ERRORS IN DESIGN, ENGINEERING OR DIMENSIONS. THE PROJECT TEAM MUST VERIFY ALL DIMENSIONS AND SUITABILITY OF DETAILS. THE PRODUCTS LISTED ARE TRADEMARKS OF EPRO SERVICES, INC.

REVISIONS

ISSUED DATE

DRAWING NO.

6.28.18

14.140.3.1