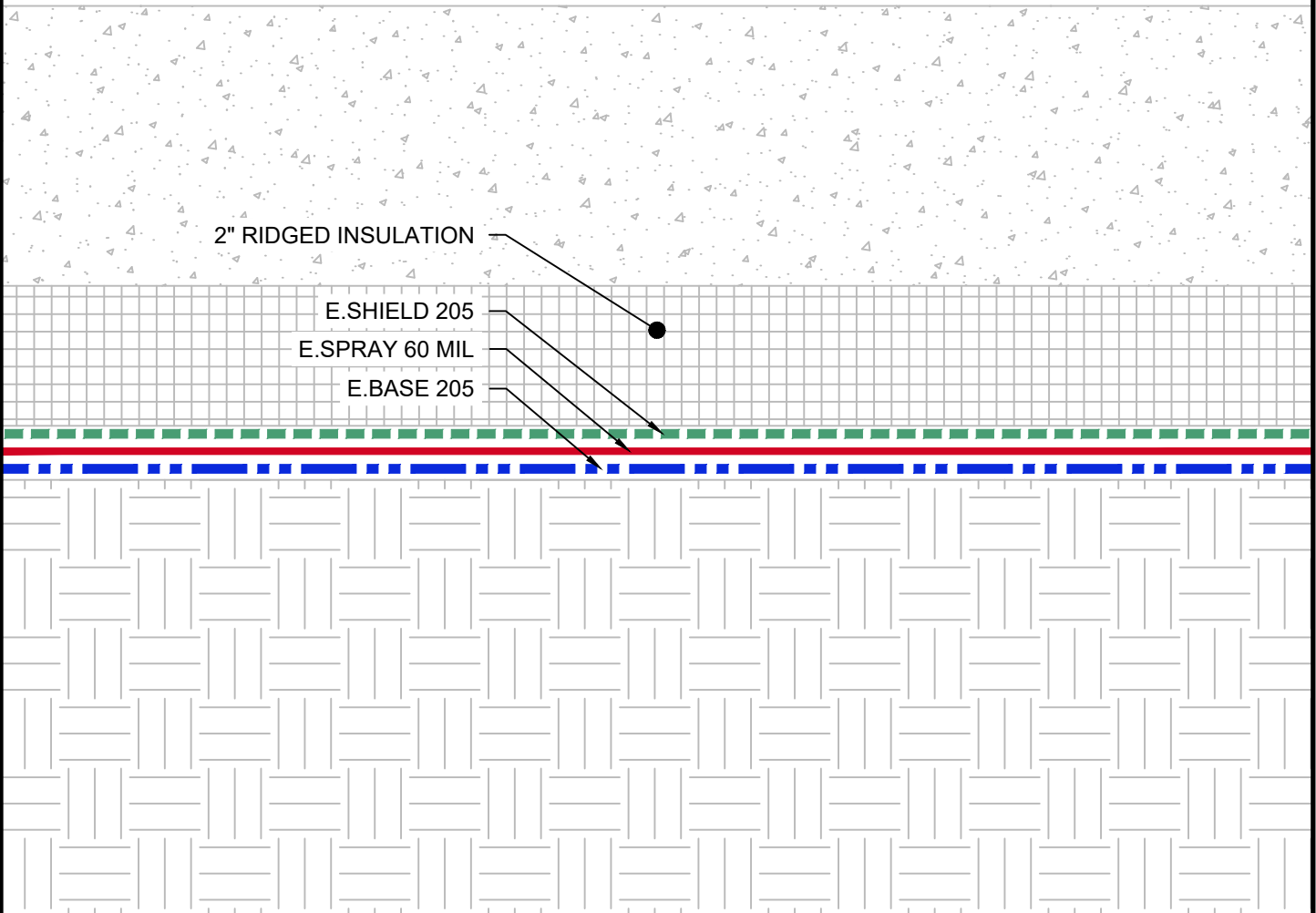




# E.PROFORMANCE UNDERSLAB ASSEMBLY

w/E.BASE 205 - GEOCOMPOSITE BASE SHEET - 18 MIL  
w/E.SPRAY - POLYMER MODIFIED ASPHALT - 60 MIL  
w/E.SHIELD 205 - GEOCOMPOSITE SHEET - 18 MIL  
TOTAL SYSTEM THICKNESS - 96 MIL



G:\My Drive\Epro Master Folder\Drafting\Details\Underslab\E.Proformance\1.100.6 UNDERSLAB ASSEMBLY with INSULATION.dwg [Detail] December 09, 2020 - 10:10am

## UNDERSLAB ASSEMBLY with INSULATION

	SYSTEM NAME	DRAWING NUMBER	
	E.PROFORMANCE	1.100.6	
	DRAFTER	DATE	
	RJT	12/09/2020	

AS A SUPPLIER OF FINISHED RPRODUCTS ONLY, EPRO SERVICES, INC. DOES NOT ASSUME RESPONSIBILITY FOR ERRORS IN DESIGN, ENGINEERING OR DIMENSIONS. THE PROJECT TEAM MUST VERIFY ALL DIMENSIONS AND SUITABILITY OF DETAILS. THE PRODUCTS LISTED ARE TRADEMARKS OF EPRO SERVICES, INC.

NTS

PAGE 1 OF 1